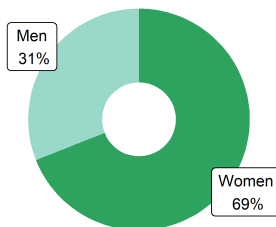
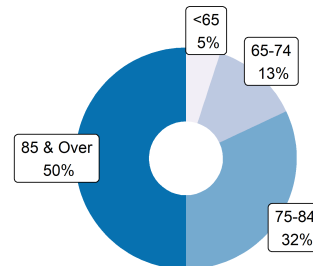


## ASSISTED LIVING RESIDENTS

Resident Gender



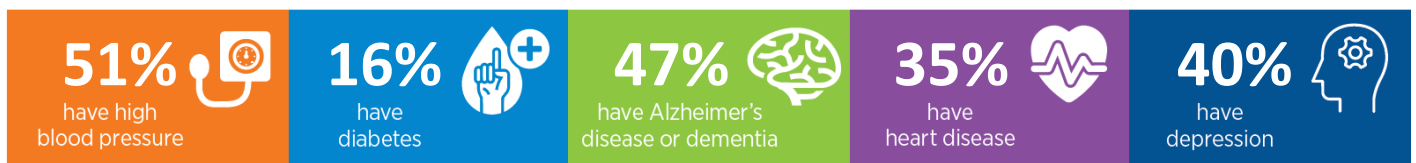
Resident Age



### Activities of Daily Living



### Common Conditions



## ASSISTED LIVING PROVIDERS

**35** assisted living communities  
**2,542** beds/units

**8%** of residents rely on **Medicaid** for their long term care in assisted living

## ECONOMIC IMPACT

### Workforce

**1,041** direct jobs  
**1,463** total\* jobs

### Economic Activity

**\$94.6** Million direct  
**\$168.1** Million total\*

### Tax Revenue

**\$4.8** Million state/local  
**\$15.6** Million federal

\*Total impact is the sum of direct, indirect, and induced effects on the economy of the state.

Sources: CDC/NCHS, National Post-acute and Long-Term Care Study (2020), State Licensure Website (Accessed May 2023) IMPLAN Economic Impact Data and Software (2021)