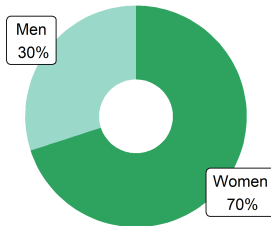


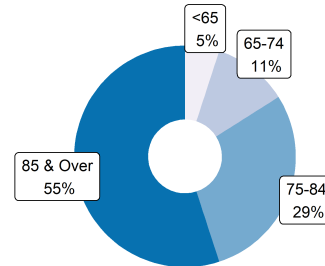


## ASSISTED LIVING RESIDENTS

### Resident Gender



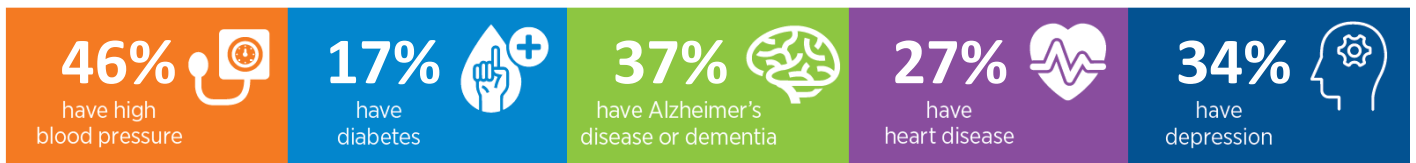
### Resident Age



### Activities of Daily Living



### Common Conditions



## ASSISTED LIVING PROVIDERS

**486** assisted living communities

**4%** of residents rely on **Medicaid** for their long term care in assisted living

## ECONOMIC IMPACT

### Workforce

**9,274** direct jobs  
**12,774** total\* jobs

### Economic Activity

**\$767.1** Million direct  
**\$1.40** Billion total\*

### Tax Revenue

**\$54.6** Million state/local  
**\$126.7** Million federal

\*Total impact is the sum of direct, indirect, and induced effects on the economy of the state.

Sources: CDC/NCHS, National Post-acute and Long-Term Care Study (2020), State Licensure Website (Accessed May 2023) IMPLAN Economic Impact Data and Software (2021)