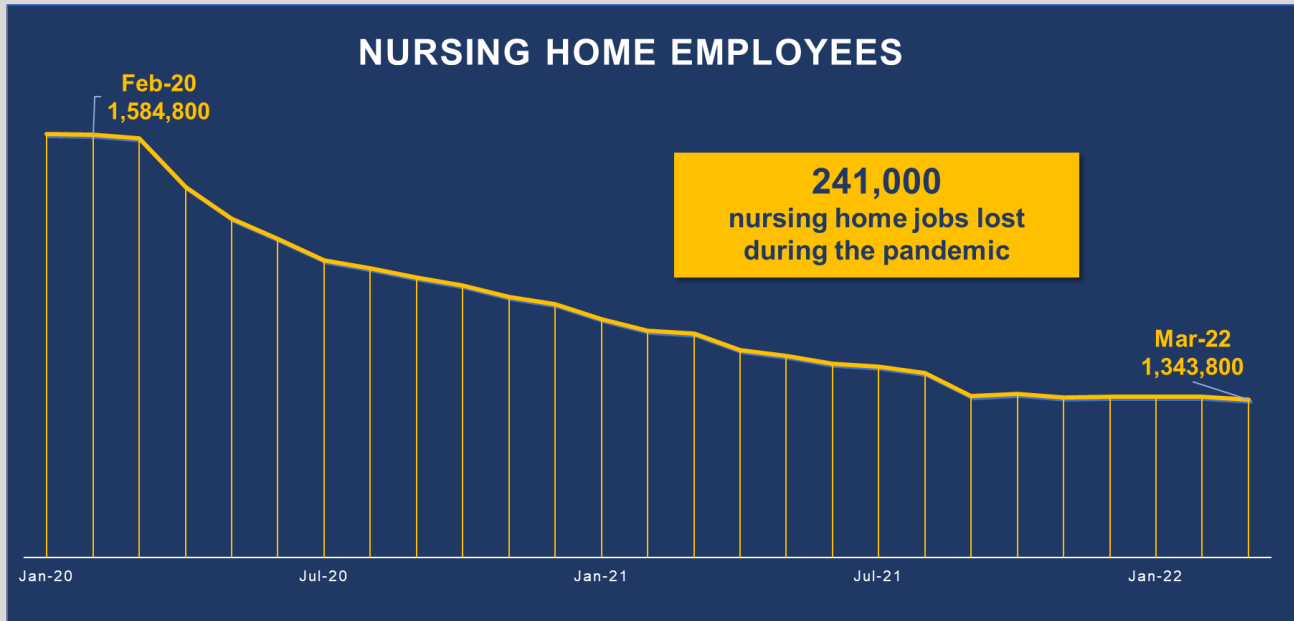


BLS MARCH 2022 JOBS REPORT

NURSING HOMES HAVE LOST 241,000 CAREGIVERS SINCE START OF PANDEMIC

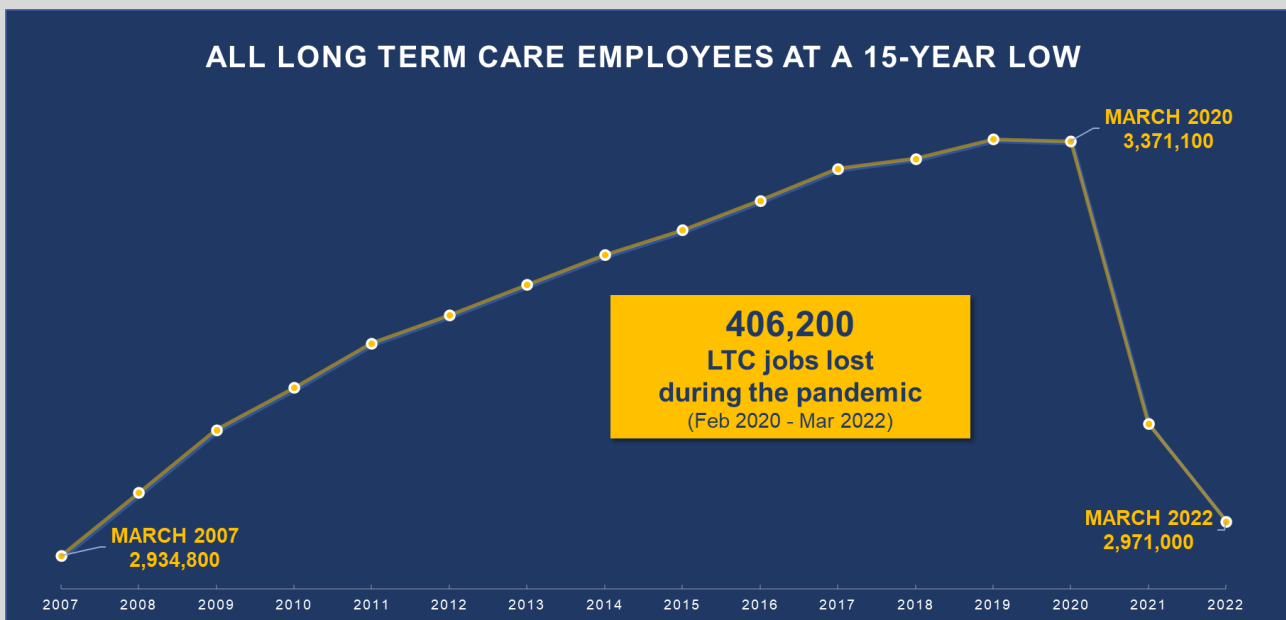
Nursing homes lost 2,500 jobs in March 2022, deepening a historic labor shortage for the sector. Overall, nursing homes have lost 241,000 employees—or 15.2% of its total workforce—since the start of pandemic.



Source: Bureau of Labor Statistics (BLS) January 2020 – March 2022

THE ENTIRE LONG TERM CARE INDUSTRY IS FACING A 15-YEAR LABOR LOW

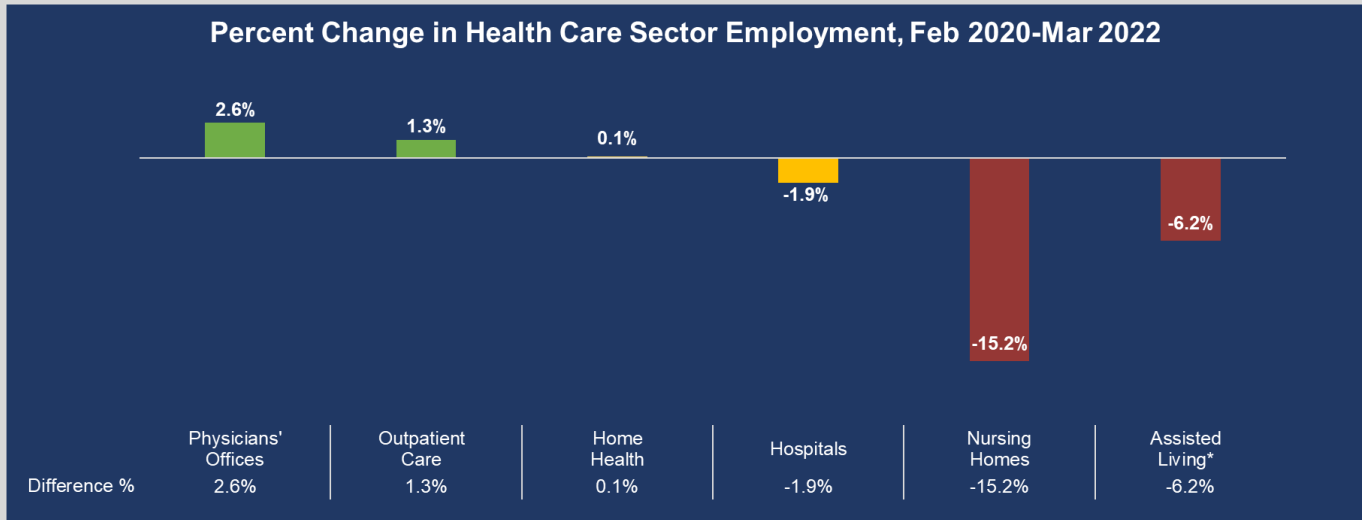
Among all long term care facilities (nursing homes and residential care facilities), the industry lost 4,000 jobs in March 2022. The industry has lost more than 400,000 employees over the course of the pandemic, and the number of employees is at levels not seen since August 2007.



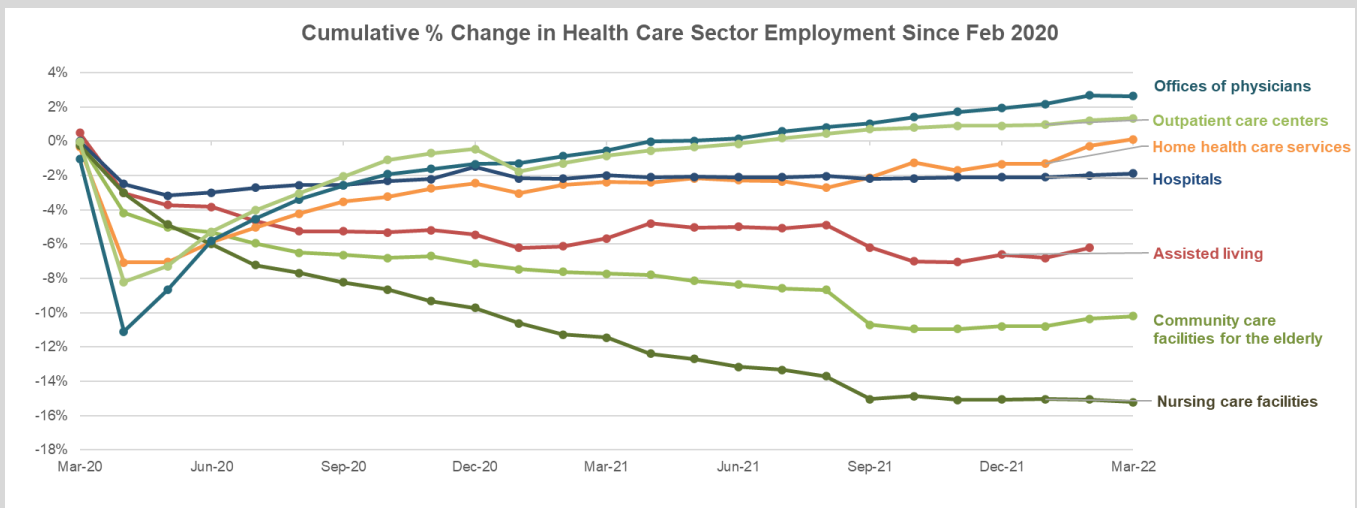
Source: Bureau of Labor Statistics (BLS) March 2007-2022; Industry: Nursing and residential care facilities (NAICS Code: 623)

LONG TERM CARE: WORST IMPACTED INDUSTRY OF HEALTH CARE SECTOR

While hospitals, physicians' offices, outpatient care centers and other health care facilities have nearly reached or surpassed pre-pandemic staffing levels, long term care facilities are still experiencing substantial job losses.



Source: Bureau of Labor Statistics (BLS) February 2020 – March 2022
*Assisted Living BLS data through February 2021



Source: Bureau of Labor Statistics (BLS) February 2020 – March 2022
*Assisted Living BLS data through February 2021

BLS Employment Data by Health Care Sector (Feb 2020 vs. Mar 2022)						
	Physicians' Offices	Outpatient Care	Home Health	Hospitals	Nursing Homes	Assisted Living*
Feb 2020	2,727,600	997,200	1,548,500	5,235,600	1,584,800	463,100
Mar 2022	2,799,500	1,010,600	1,550,500	5,137,300	1,343,800	434,300
Difference #	71,900 jobs gain	13,400 jobs gain	2,000 jobs gain	(98,300) jobs lost	(241,000) jobs lost	(28,800) jobs lost
Difference %	2.6%	1.3%	0.1%	-1.9%	-15.2%	-6.2%

Source: Bureau of Labor Statistics (BLS) February 2020 – March 2022

*Assisted Living BLS data through February 2021