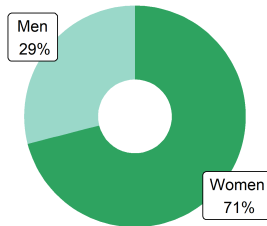


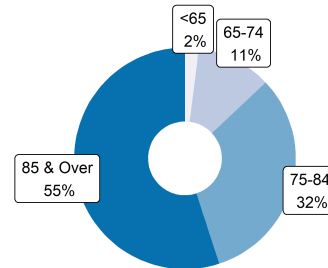


## ASSISTED LIVING RESIDENTS

### Resident Gender



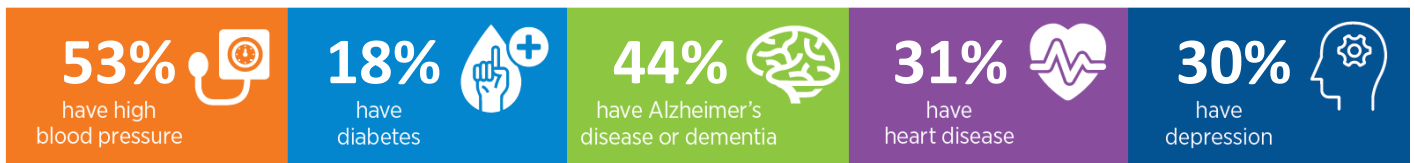
### Resident Age



### Activities of Daily Living



### Common Conditions



## ASSISTED LIVING PROVIDERS

**328** assisted living communities

**22,774** beds/units

**6%** of residents rely on **Medicaid** for their long term care in assisted living

## ECONOMIC IMPACT

### Workforce

**5,439** direct jobs

**7,888** total\* jobs

### Economic Activity

**\$461.3** Million direct

**\$885.2** Million total\*

### Tax Revenue

**\$41.7** Million state/local

**\$75.0** Million federal

\*Total impact is the sum of direct, indirect, and induced effects on the economy of the state.

Sources: CDC/NCHS, National Post-acute and Long-Term Care Study (2020), State Licensure Website (Accessed May 2023) IMPLAN Economic Impact Data and Software (2021)