

Trends in Nursing Facility Standard Health Survey Citations

American Health Care Association
Reimbursement and Research Department

September 2009



Trends in Nursing Facilities Standard Health Survey Citations

TABLE OF CONTENTS

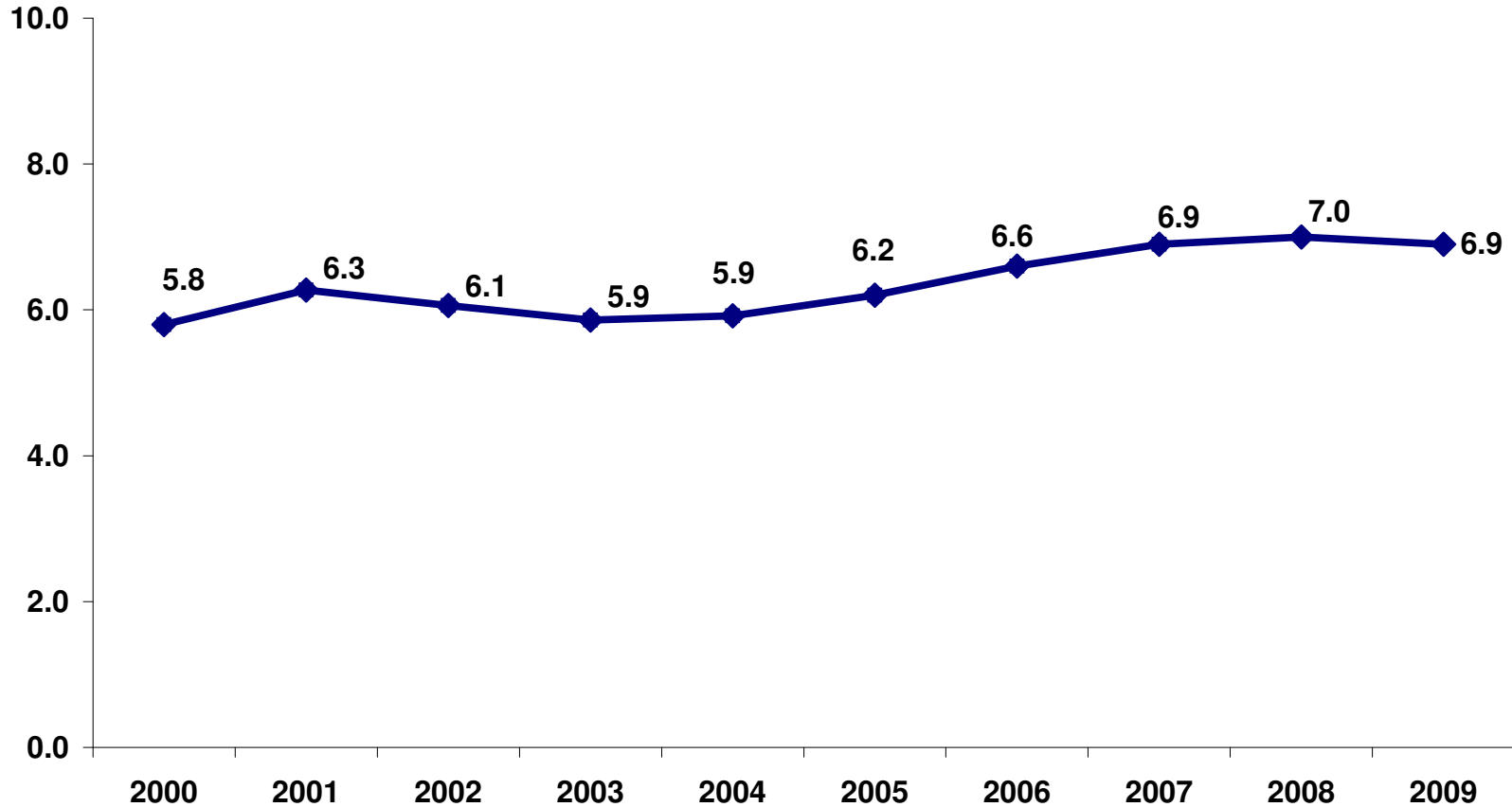
Table of Contents	2
Average Number of Standard Health Survey Citations in Nursing Facilities Over Time.....	3
Percentage of Standard Health Survey Citation-Free Nursing Facilities Over Time.....	4
Percentage of Nursing Facilities in Substantial Compliance with Standard Health Survey Over Time.....	5
Percentage of Nursing Facilities with Standard Health Survey Substandard Quality of Care Citations Over Time	6
Percentage of Nursing Facilities with Standard Health Survey Immediate Jeopardy Citations Over Time	7
Overview of OSCAR Nursing Facility Citation data	8
Contact Information	9

**American Health Care Association
Reimbursement and Research Department**





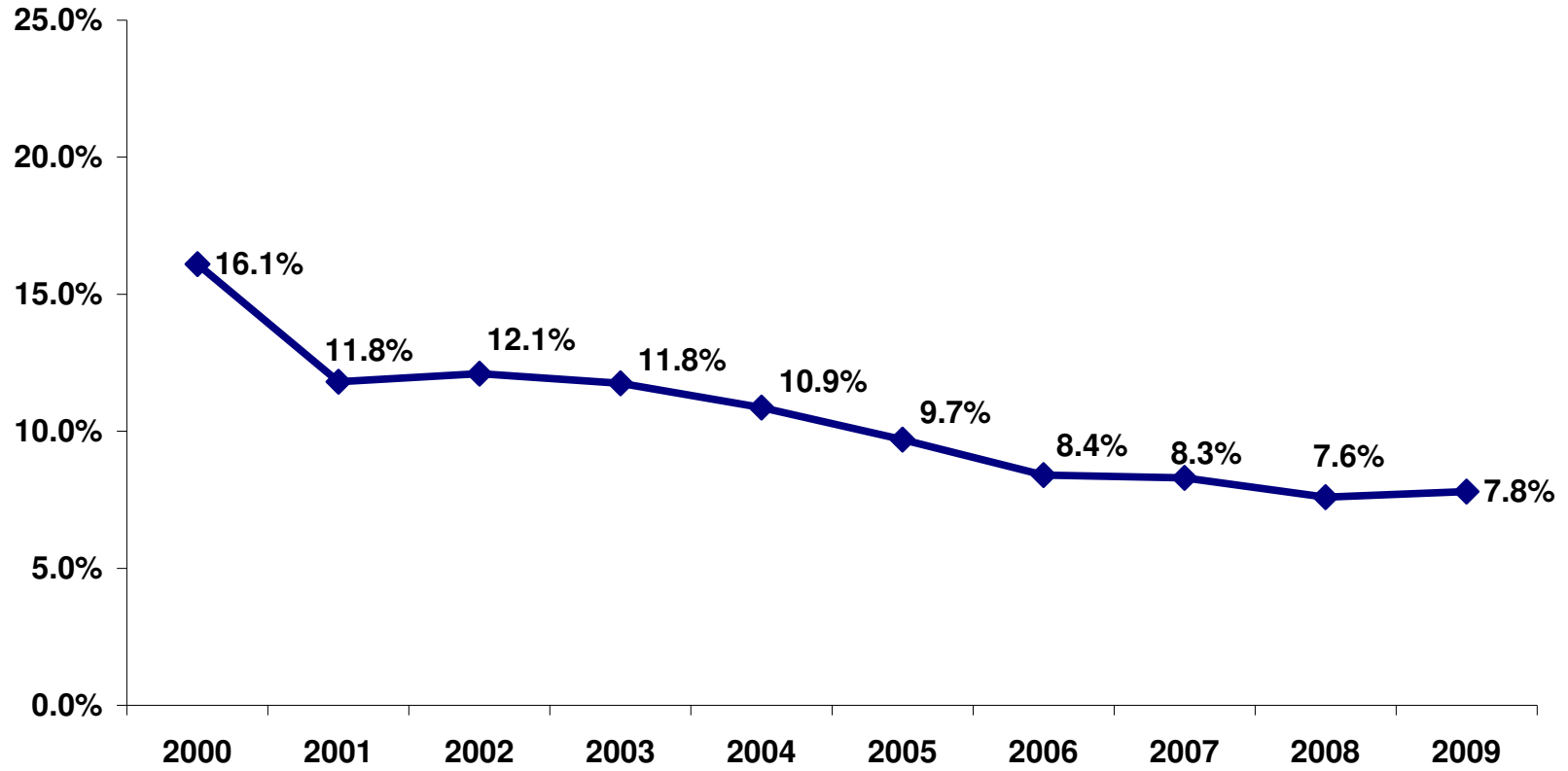
Average Number of Standard Health Survey Citations in Nursing Facilities Over Time



Source: Computed by AHCA R&R Department using CMS Nursing Facility OSCAR standard health survey data. Various years. September. American Health Care Association - Reimbursement and Research Department



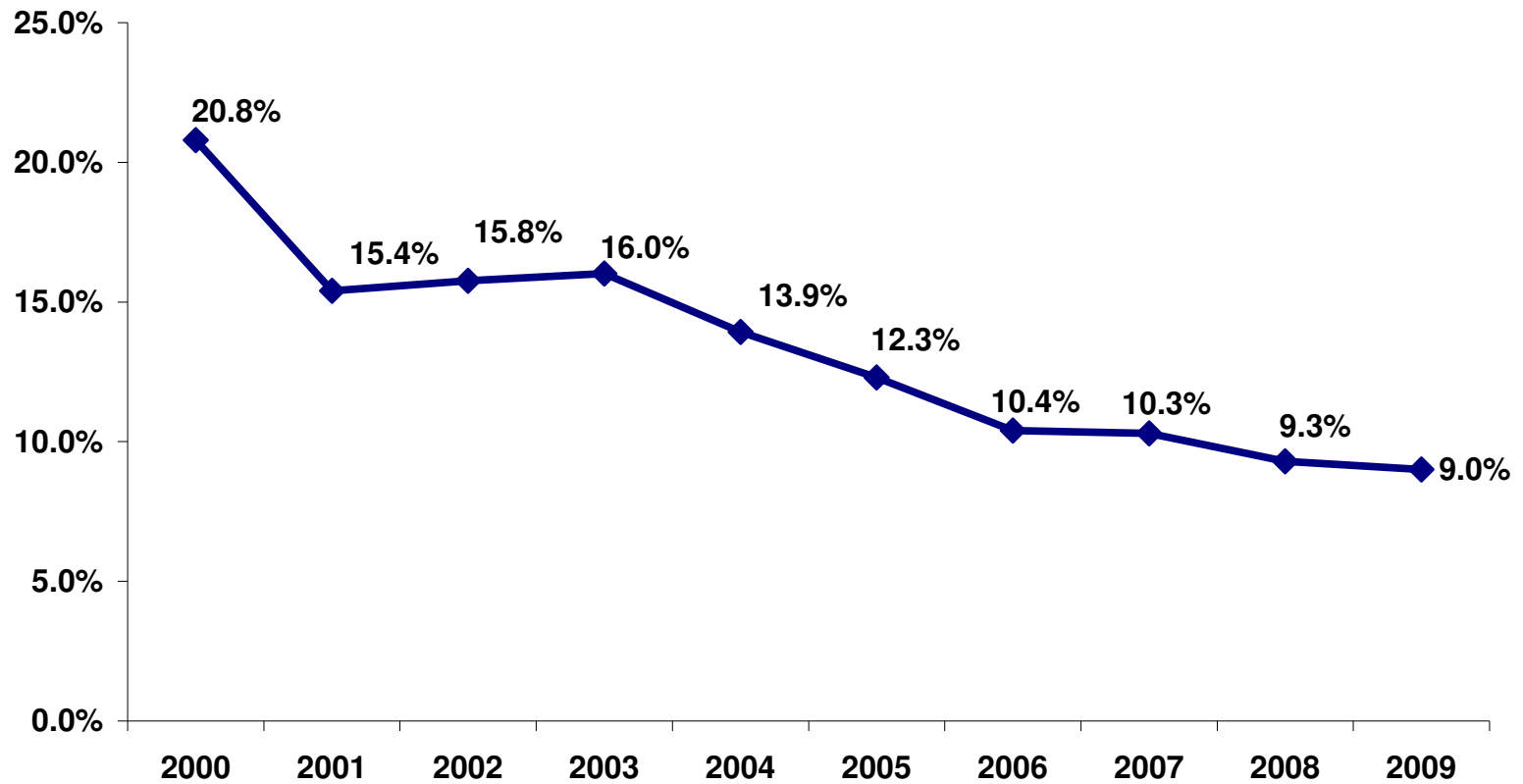
Percentage of Standard Health Survey Citation-Free Nursing Facilities Over Time



Source: Computed by AHCA R&R Department using CMS Nursing Facility OSCAR standard health survey data. Various years. September. American Health Care Association - Reimbursement and Research Department



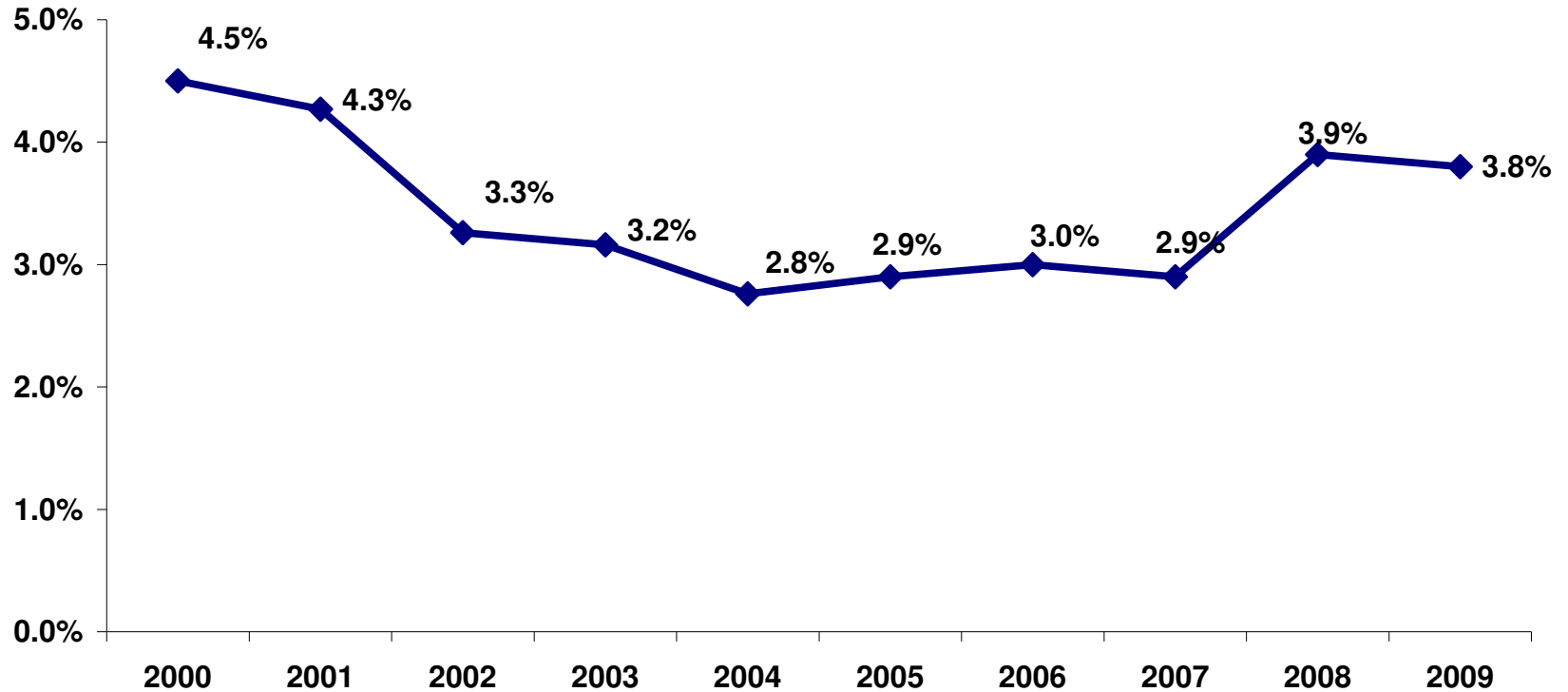
Percentage of Nursing Facilities in Substantial Compliance with Standard Health Survey Over Time



Source: Computed by AHCA R&R Department using CMS Nursing Facility OSCAR standard health survey data. Various years. September. American Health Care Association - Reimbursement and Research Department



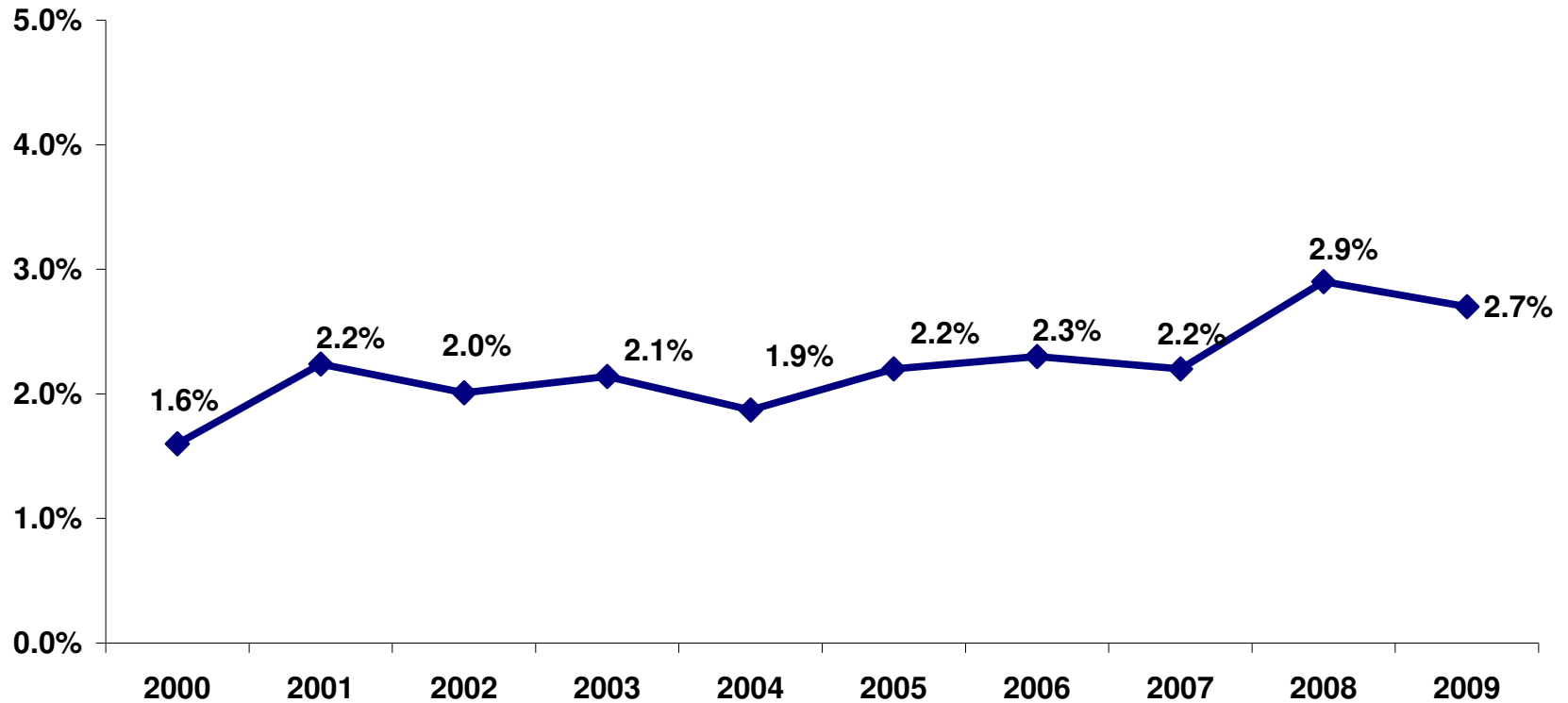
Percentage of Nursing Facilities with Standard Health Survey Substandard Quality of Care Citations Over Time



Source: Computed by AHCA R&R Department using CMS Nursing Facility OSCAR standard health survey data. Various years. September. American Health Care Association - Reimbursement and Research Department



Percentage of Nursing Facilities with Standard Health Survey Immediate Jeopardy Citations Over Time



Source: Computed by AHCA R&R Department using CMS Nursing Facility OSCAR standard health survey data. Various years. September. American Health Care Association - Reimbursement and Research Department

Immediate Jeopardy (IJ) - A facility is cited with immediate jeopardy if it receives any deficiency at scope and severity level J, K, or L (actual harm that possess immediate jeopardy to resident health or safety). Consequences include the immediate imposition of remedies as opposed to a grace period for correcting deficiencies.

Online Survey, Certification and Reporting System (OSCAR) - A database maintained by the Centers for Medicare and Medicaid Services (CMS) which contains the survey, certification, complaint and enforcement activity on healthcare providers contracting with the government to provide Medicare and Medicaid services to beneficiaries. The OSCAR database for standard surveys contains four records per provider entity. These records include the most recent inspection (current survey) and three previous inspections (prior, second prior, and third prior surveys).

Standard Health Survey - A standard health survey is the periodic inspection of the service provided by a facility to determine compliance with the requirements of Medicaid and Medicare participation. Standard health surveys are to be conducted at least once every 15 months at a facility.

Substandard Quality of Care (SQC) - Effective July 1, 1995, a provider entity is cited as providing substandard quality of care if it receives a deficiency in one or more of the following compliance categories: Quality of Care (F309 - F333), Quality of Life (F240 - F258) or Resident Behavior and Facility Practices (F221 - F225) with a scope and severity level F, H, I, J, K, or L.

Substantial Compliance (SC) - A facility is designated as being in substantial compliance with all imposed regulations if the scope and severity of all cited deficiencies is recorded at A, B, or C or if the facility is found to be deficiency-free at the time of the survey.



American Health Care Association

1201 L Street, NW
Washington, DC, 20005
T: (202) 842-4444
Email: research@ahca.org