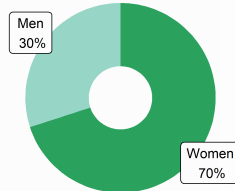


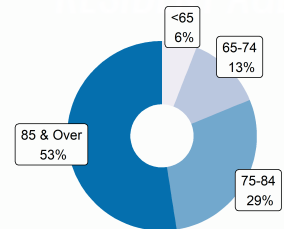
FACTS AND FIGURES FOR THE PROFESSION

ASSISTED LIVING RESIDENTS

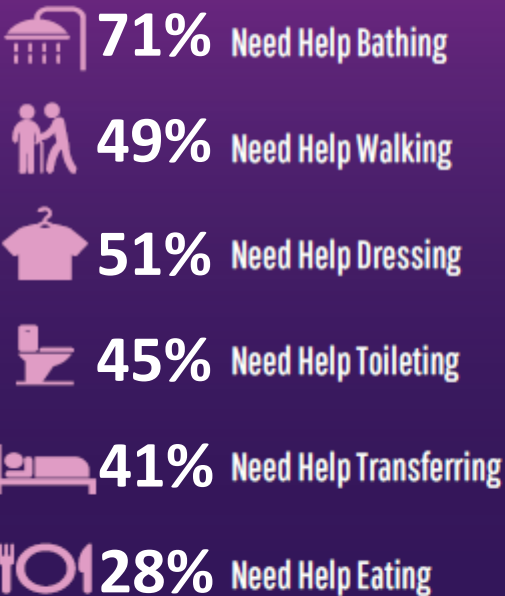
Resident Gender



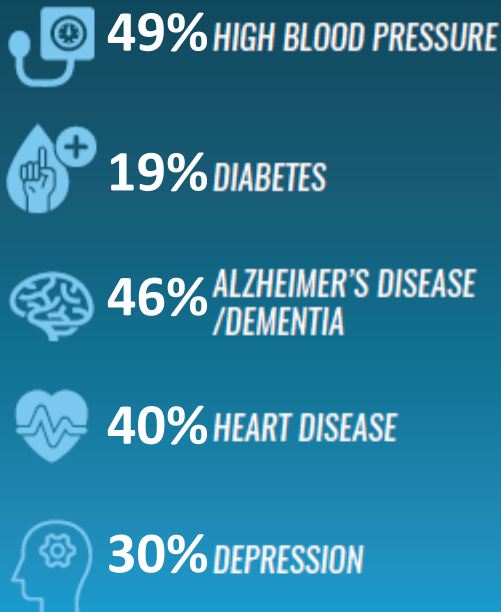
Resident Age



ACTIVITIES OF DAILY LIVING



COMMON CONDITIONS



ASSISTED LIVING PROVIDERS

4,013 TOTAL AL COMMUNITIES

59,912 TOTAL BEDS / UNITS

22% of residents rely on Medicaid for their long term care in assisted living

ECONOMIC IMPACT

*Total impact is the sum of direct, indirect, and induced effects on the economy of the state.
Sources: CDC/NCHS, National Post-acute and Long-Term Care Study (2020), State Licensure Website, IMPLAN Economic Impact Data and Software

WORKFORCE

18,983 jobs direct

28,242 jobs total*

ECONOMIC ACTIVITY

\$1.60 Billion direct

\$3.22 Billion total*

TAX REVENUE

\$95 Million state/local

\$321 Million federal