



Provider Network Data Dashboard in LTC Trend Tracker



Overview of Provider Network Data

Page

- This dashboard allows providers within a Provider Owned Network to be able to see their quality measures data in one place
- Providers within the network can benchmark themselves against other providers within the network as well as providers outside the network within their state
- The dashboard is dynamic so users can see the data displayed in various ways – map, trend chart, trend lines, etc.
- Only users attached to Provider Owned Network facilities have access to this dashboard

Click on Provider Network Data



Notifications

Provider Network Data

Dashboards

Run a Report

Save or Schedule a Report

Saved & Scheduled Reports

Five-Star QM Predictor Tool

Value-Based Purchasing Tool

Manage Building Groups

Administration

Upload Data

Download Data

Manage Publications

Publications Administration

COVID-19 Data

NEW!

AHCA
AMERICAN HEALTH CARE ASSOCIATION

NCAL
NATIONAL CENTER FOR ASSISTED LIVING

Welcome, ahhcustomerserviceTT@ahca.org

Profile

Logout

Resources

Help

LTCtrendtracker
YOUR QUALITY & PERFORMANCE SOLUTION

Export to PDF

Modify Dashboard

Dashboard

User:
Login ID: ahhcustomerserviceTT@ahca.org
Organization: AHCA Administrative Organization

Selection Criteria:
My Buildings: AHCA Administrative Organization (3594 Currently Active Buildings).
Peers: Peers in States that match my centers; No peer type restriction; Centers from My Org are not included in peer group (0 Currently Active Buildings).

My Org 54.5%
Peers 63.0%

Show Details
View Report

All Staff Turnover

My Org 39.9%
Peers 39.8%

Show Details
View Report

Hospital Readmissions

My Org 60.5%
Peers 61.8%

Show Details
View Report

Resident Satisfaction Rating

All Staff Turnover

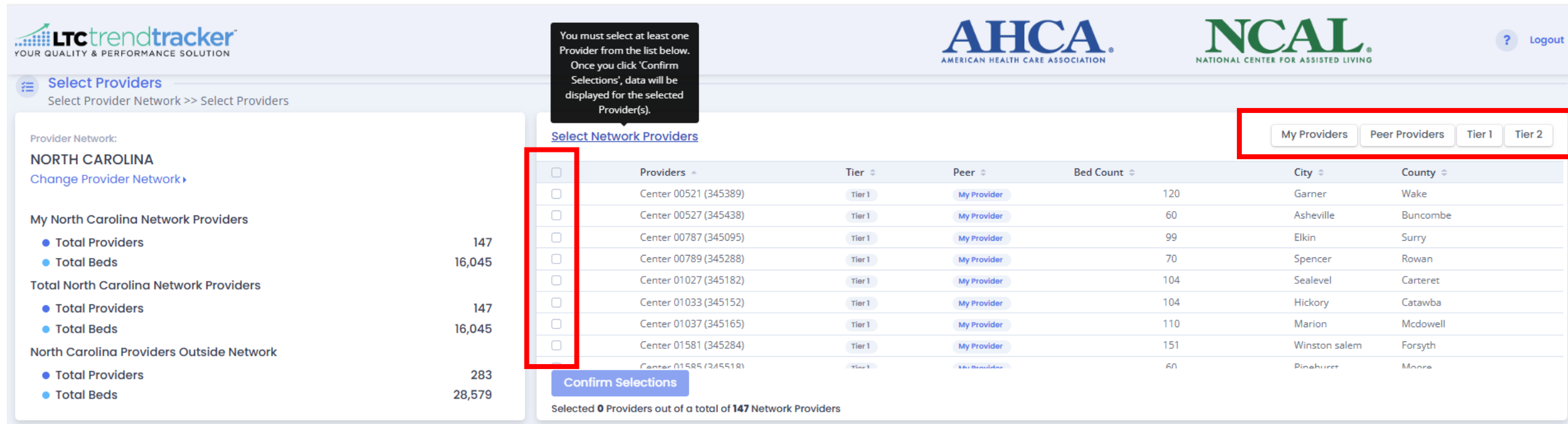
All Staff Turnover by Year

Year	My Centers/Communities	Peer Comparison
2015	54.5%	63.0%
2014	54.9%	41.1%

All Staff Turnover by Building

Copyright © 2024 AHCA

Select the Providers you want to run the dashboard for → Click Confirm Selections



LTCtrendtracker
YOUR QUALITY & PERFORMANCE SOLUTION

Select Providers
Select Provider Network >> Select Providers

Provider Network:
NORTH CAROLINA
[Change Provider Network](#)

My North Carolina Network Providers

- Total Providers: 147
- Total Beds: 16,045

Total North Carolina Network Providers

- Total Providers: 147
- Total Beds: 16,045

North Carolina Providers Outside Network

- Total Providers: 283
- Total Beds: 28,579

Select Network Providers

You must select at least one Provider from the list below. Once you click 'Confirm Selections', data will be displayed for the selected Provider(s).

<input type="checkbox"/>	Providers	Tier	Peer	Bed Count	City	County
<input type="checkbox"/>	Center 00521 (345389)	Tier 1	My Provider	120	Garner	Wake
<input type="checkbox"/>	Center 00527 (345438)	Tier 1	My Provider	60	Asheville	Buncombe
<input type="checkbox"/>	Center 00787 (345095)	Tier 1	My Provider	99	Elkin	Surry
<input type="checkbox"/>	Center 00789 (345288)	Tier 1	My Provider	70	Spencer	Rowan
<input type="checkbox"/>	Center 01027 (345182)	Tier 1	My Provider	104	Sealevel	Carteret
<input type="checkbox"/>	Center 01033 (345152)	Tier 1	My Provider	104	Hickory	Catawba
<input type="checkbox"/>	Center 01037 (345165)	Tier 1	My Provider	110	Marion	Mcdowell
<input type="checkbox"/>	Center 01581 (345284)	Tier 1	My Provider	151	Winston salem	Forsyth
<input type="checkbox"/>	Center 01585 (345518)	Tier 1	My Provider	60	Pinehurst	Moore

Confirm Selections

Selected 0 Providers out of a total of 147 Network Providers

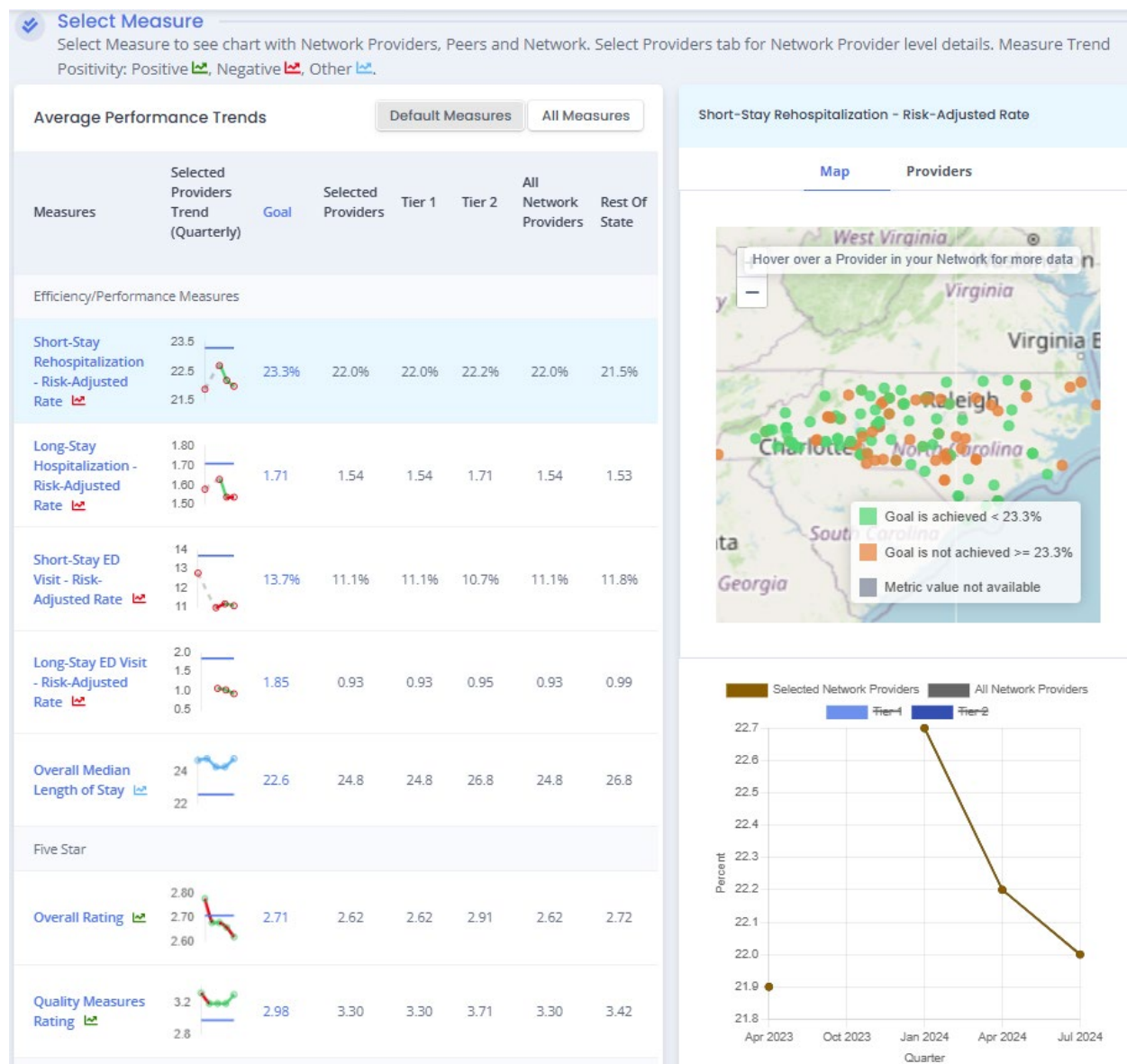
My Providers **Peer Providers** **Tier 1** **Tier 2**

- **My Providers** – this button will select all the buildings you have access to in Trend Tracker.
- **Peer Providers** – this button will select all other buildings within the network that you do not have access to.
- **Tier 1** – this button will select all Tier 1 providers within the network
- **Tier 2** – this button will select all Tier 2 providers within the network

Provider Network Data Displayed

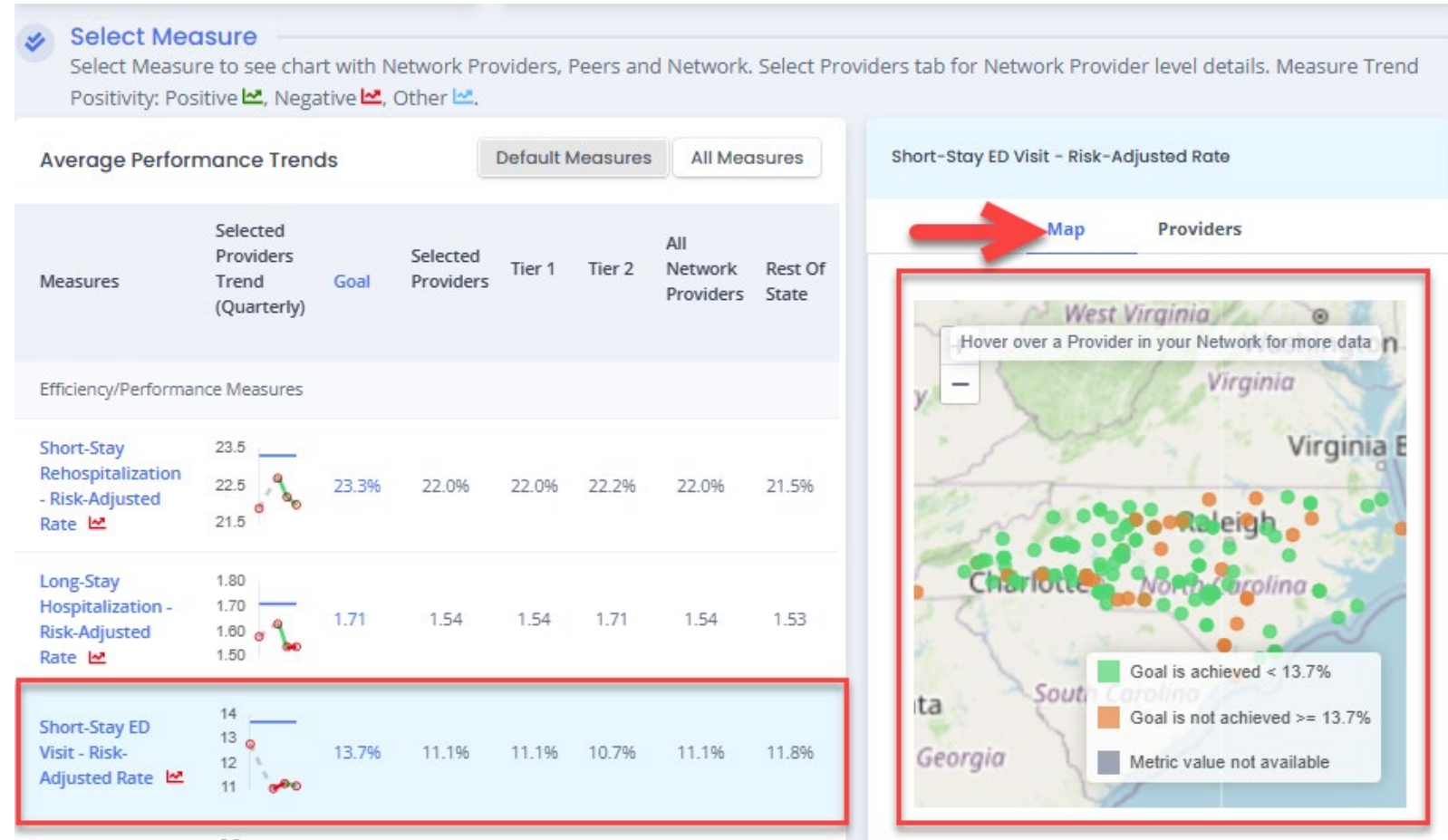
Average Performance Trends Columns:

- **Selected Providers Trend** – represents aggregate data trend line for the providers selected at the top of the dashboard
- **Goal** – state average
- **Selected Providers** – represents aggregate data for the providers selected at the top of the dashboard
- **Tier 1** – represents aggregate data for the Tier 1 providers
- **Tier 2** – represents aggregate data for the Tier 2 providers
- **All Network Providers** – represents aggregate data for all providers within the network.
- **Rest of State** – represents aggregate data for all providers outside of the network in the state



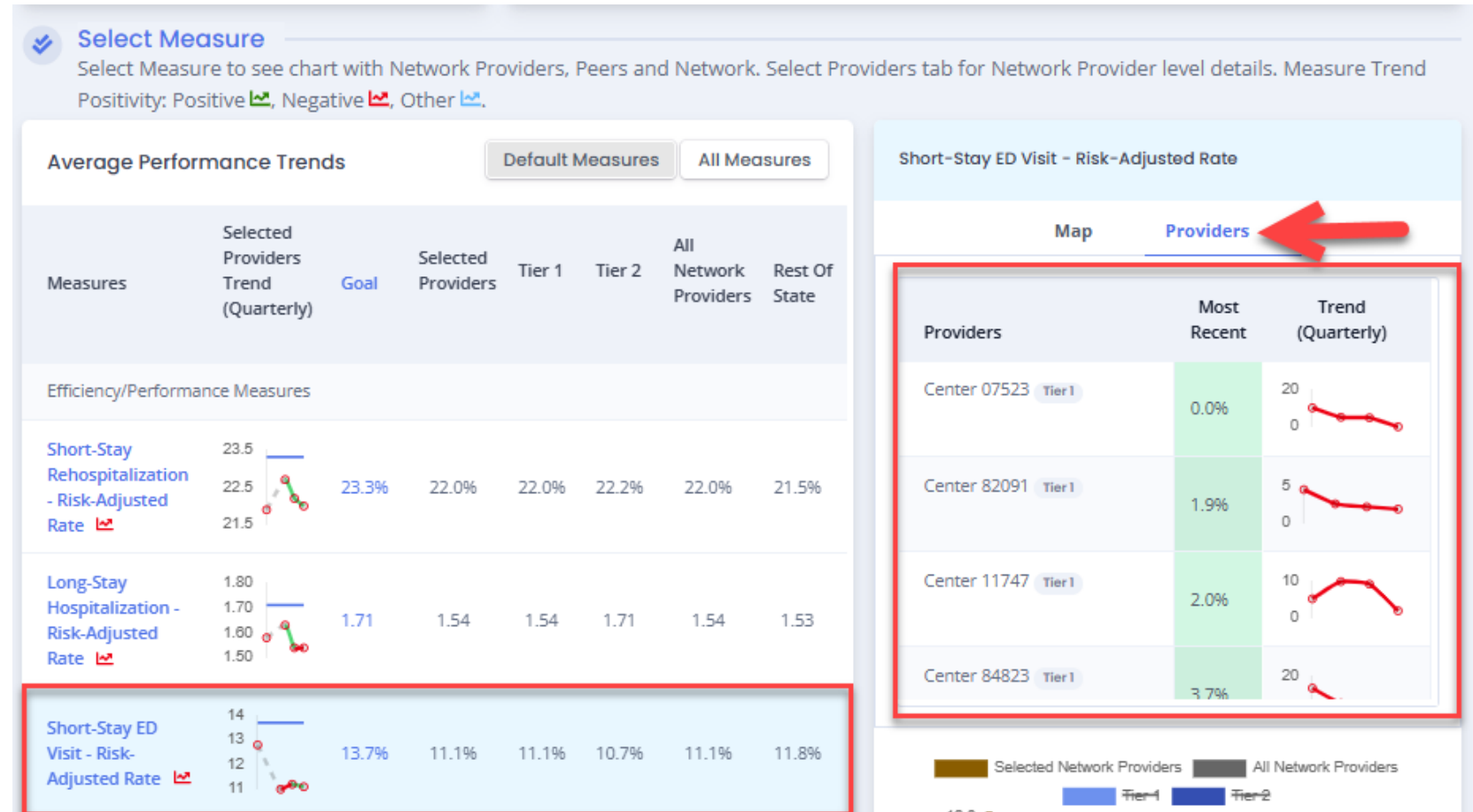
Map Feature

- By clicking on an individual metric, the Map will automatically display how In-Network Providers are performing on that metric.
- Providers are represented by “dots” on the map.
 - **Orange** – facility is not at the goal [state average]
 - **Green** – facility has achieved the goal [state average]
 - **Grey** – data is not available
- Hovering over a dot will display facility level data on that metric.



Viewing Provider Specific Data

- By clicking on Providers, users can see facility-level data on the measure that was selected.
- Providers can see Provider name, Tier level, the most recent data value, and a quarterly Trend line on that measure.
- Higher performers [on that measure] are listed first.



Viewing Trend Data on Chart

- Underneath the Maps/Providers section is the Trend Line Chart.
- Click on the rectangle boxes to display data on the line chart:
 - **Selected Network Providers** – a line will populate on the chart.
 - **All Network Providers** – displays a line for all in-network
 - **Tier 1** – displays a line for in-network providers that are Tier 1
 - **Tier 2** – displays a line for in-network providers that are Tier 2



LTC Trend Tracker Contact Information

LTC Trend Tracker Help Desk:
Help@LTCtrendTracker.com

Research Inbox: Research@ahca.org