

Trends in Publicly Reported Nursing Facility Quality Measures

American Health Care Association
Reimbursement and Research Department

January 2011



Trends in Publicly Reported Nursing Facility Quality Measures

TABLE OF CONTENTS

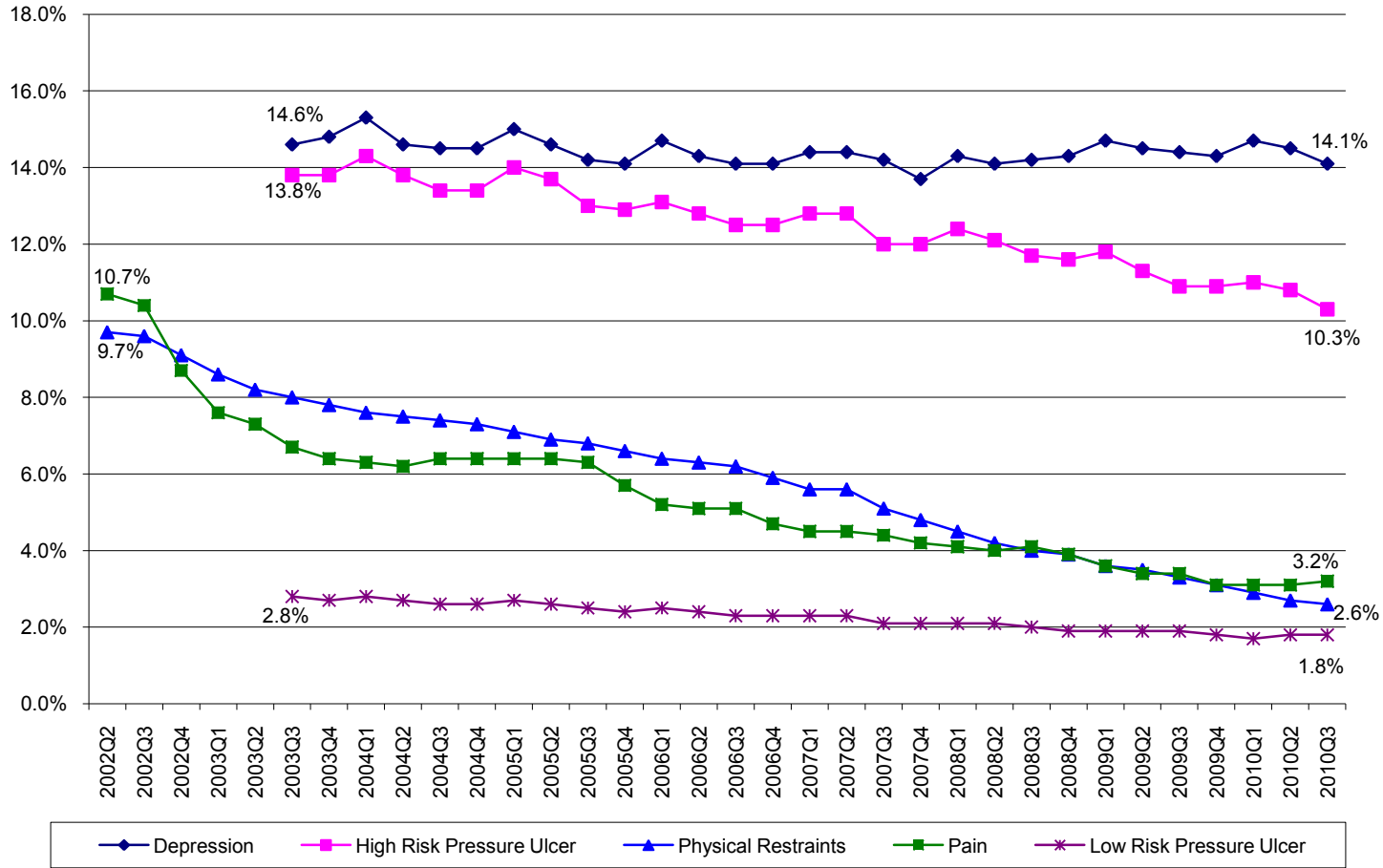
Table of Contents	2
Chronic Care: Physical Condition and Depression	3
Chronic Care: Physical Functioning and Weight Loss	4
Chronic Care: Urinary System	5
Post Acute Care.....	6
Overview of CMS Nursing Facility Quality Measures	7
Contact Information	8

**American Health Care Association
Reimbursement and Research Department**





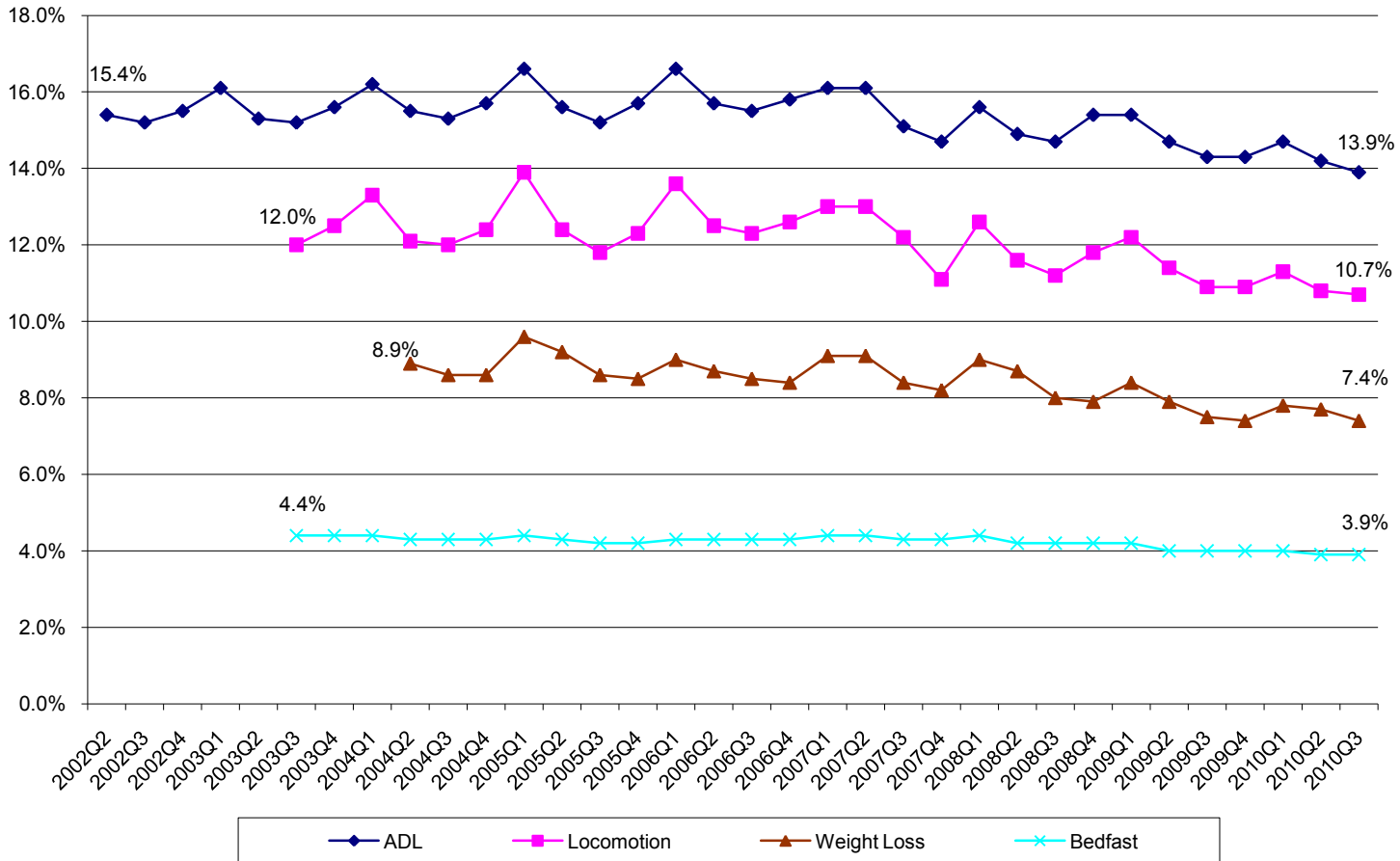
Trends in Nursing Facility Chronic Care Quality Measures: Physical Condition and Depression Related



Source: Computed by AHCA R&R Department using CMS Nursing Home Compare. Various years and quarters. American Health Care Association - Reimbursement and Research Department



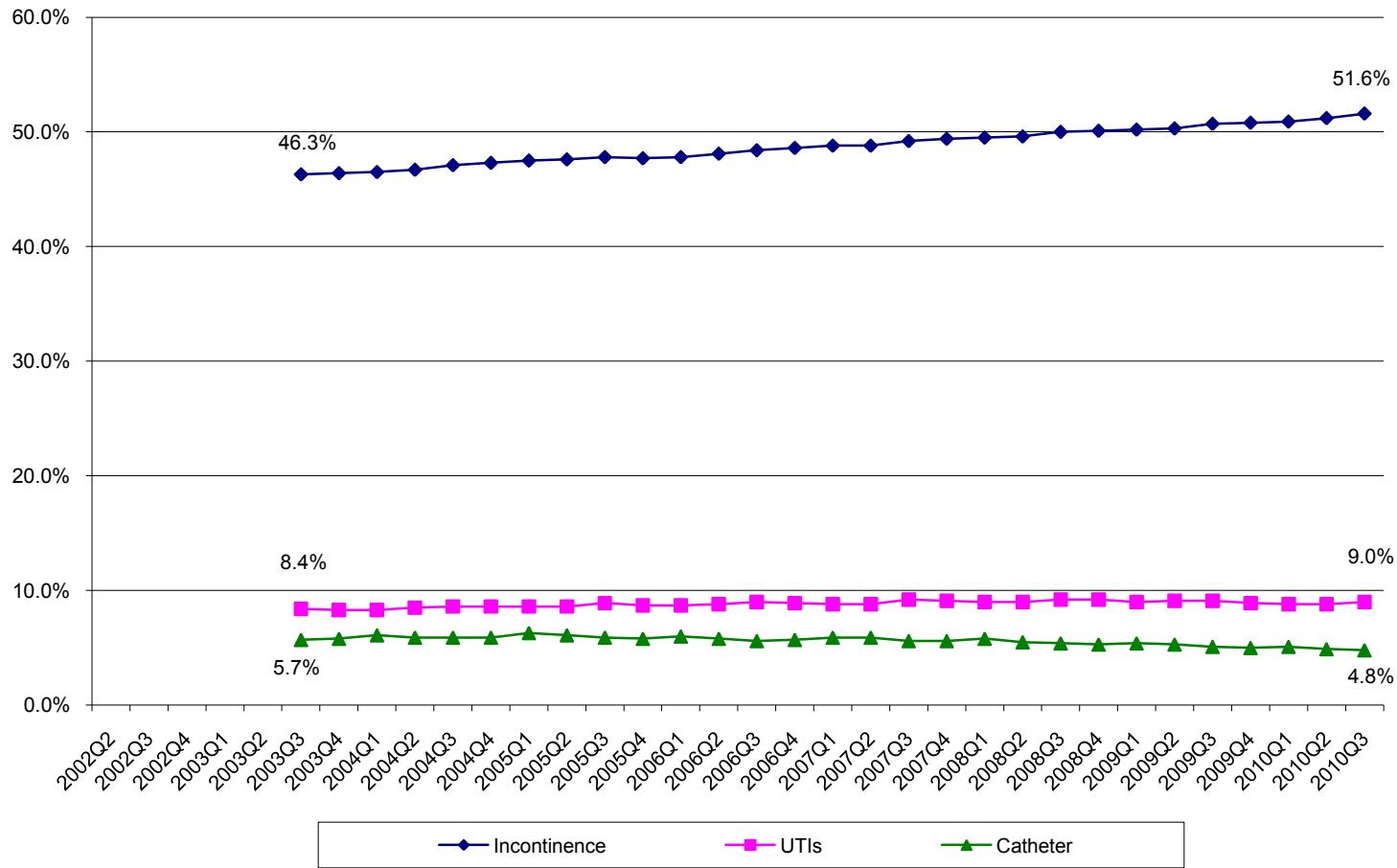
Trends in Nursing Facility Chronic Care Quality Measures: Physical Functioning and Weight Loss Related



Source: Computed by AHCA R&R Department using CMS Nursing Home Compare. Various years and quarters. American Health Care Association - Reimbursement and Research Department



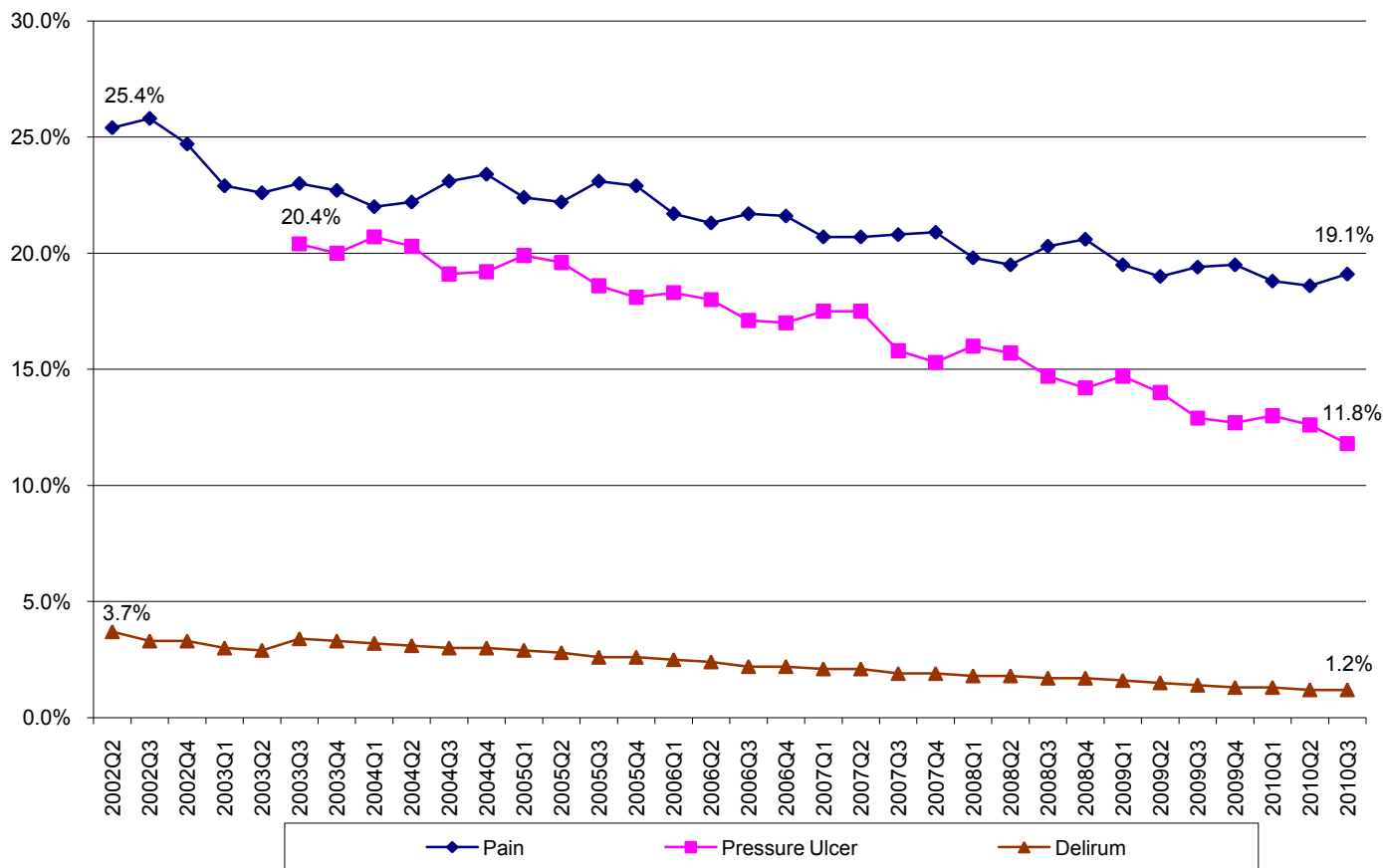
Trends in Nursing Facility Chronic Care Quality Measures: Urinary System Related



Source: Computed by AHCA R&R Department using CMS Nursing Home Compare. Various years and quarters. American Health Care Association - Reimbursement and Research Department



Trends in Nursing Facility Post-Acute Care Quality Measures



Source: Computed by AHCA R&R Department using CMS Nursing Home Compare. Various years and quarters. American Health Care Association - Reimbursement and Research Department

Overview of CMS Nursing Facility Quality Measures

Nursing Facility (NF) Quality Measures (QM) data are computed and updated quarterly by the Centers for Medicare & Medicaid Services (CMS), and are publicly reported on the Nursing Home Compare website (<http://www.medicare.gov/NHCompare/home.asp>). There is generally a three to four month lag between the end date of the target quarter over which the QMs are calculated, and when the QMs are reported on Nursing Home Compare.

The nursing facility QMs are derived from the Minimum Data Set (MDS) and area reported at the facility level. Subject to a number of exclusions, the score for each facility-level QM is computed as the ratio of the sum of eligible residents in the facility with a particular condition to the sum of eligible residents in the facility. The state-level QMs reported below are computed as the unweighted average of available facility-level QMs.

A brief description of each QM is found below. A more detailed snap shot of how the QMs are calculated can be found at: <http://www.cms.hhs.gov/NursingHomeQualityInits/downloads/NHQISnapshot.pdf>.

CMS Nursing Facility Quality Measures		
Measure	Description	Look Back Period
Chronic Care		
Pain	Percent of Residents who have Moderate to Severe Pain	7 days
High Risk Pressure Ulcer	Percent of High-Risk Residents Who Have Pressure Sores	7 days
Low Risk Pressure Ulcer	Percent of Low-Risk Residents Who Have Pressure Sores	7 days
Physical Restraint	Percent of Residents Who Were Physically Restrained	7 days
Depression	Percent of Residents Who are More Depressed or Anxious	30 Days
Weight Loss	Percent of Residents Who Lose Too Much Weight	30 days
ADL	Percentage of Residents Whose Need for Help With Daily Activities has Increased	7 Days
Bedfast	Percent of Residents Who Spent Most of Their Time in Bed or in a Chair	7 days
Locomotion	Percent of Residents Whose Ability to Move About in and Around Their Room Got Worse	7 days
Indwelling Catheter	Percent of Residents Who Have/Had a Catheter Inserted and Left in Their Bladder	7 days
Incontinence	Percent of Low-Risk Residents Who Lose Control of Their Bowels or Bladder	14 days
UTI	Percent of Residents with Urinary Tract Infection	30 days
Influenza Vaccination	Percent of Residents Given Influenza Vaccination During the Flu Season	October 1 thru March 31
Pneumococcal Vaccination	Percent of Residents Who Were Assessed and Given Pneumococcal Vaccination	5 years
Post Acute Care		
Delirium	Percent of Short-Stay Residents With Delirium	7 days
Pain	Percent of Residents Who Had Moderate to Severe Pain	7 days
Pressure Ulcer	Percent of Short-Stay Residents With Pressure Sores	7 Days
Influenza Vaccination	Percent of Short-Stay Residents Given Influenza Vaccination During the Flu Season	October 1 –March 31
Pneumococcal Vaccination	Percent of Short-Stay Residents Who Were Assessed and Given Pneumococcal Vaccination	5 Years



American Health Care Association

1201 L Street, NW
Washington, DC, 20005
T: (202) 842-4444
Email: research@ahca.org