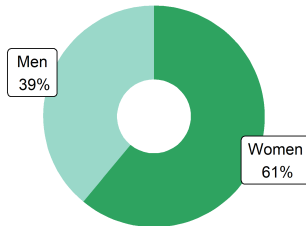


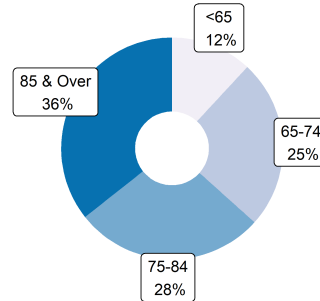


ASSISTED LIVING RESIDENTS

Resident Gender



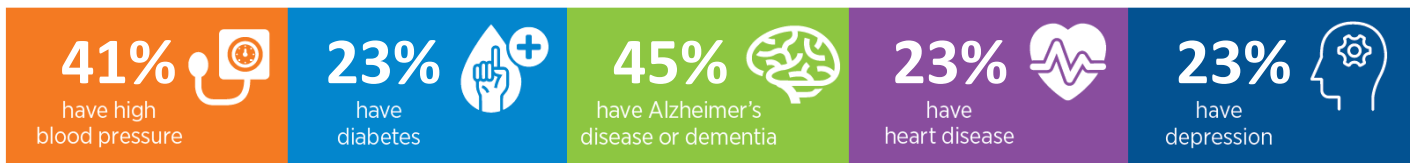
Resident Age



Activities of Daily Living



Common Conditions



ASSISTED LIVING PROVIDERS

586 assisted living communities
37,542 beds/units

43% of residents rely on **Medicaid** for their long term care in assisted living

ECONOMIC IMPACT

Workforce	Economic Activity	Tax Revenue
13,926 direct jobs	\$1.11 Billion direct	\$76.7 Million state/local
20,131 total* jobs	\$2.18 Billion total*	\$191.3 Million federal

*Total impact is the sum of direct, indirect, and induced effects on the economy of the state.
Sources: CDC/NCHS, National Post-acute and Long-Term Care Study (2020), State Licensure Website (Accessed May 2023) IMPLAN Economic Impact Data and Software (2021)