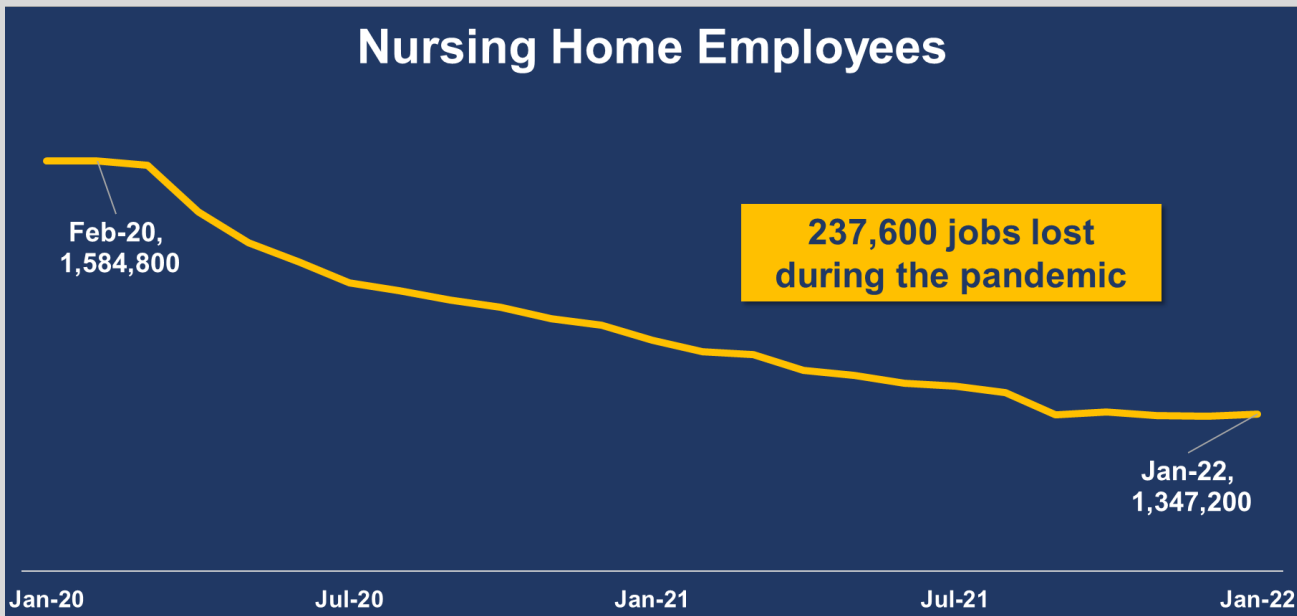


BLS JANUARY JOBS REPORT

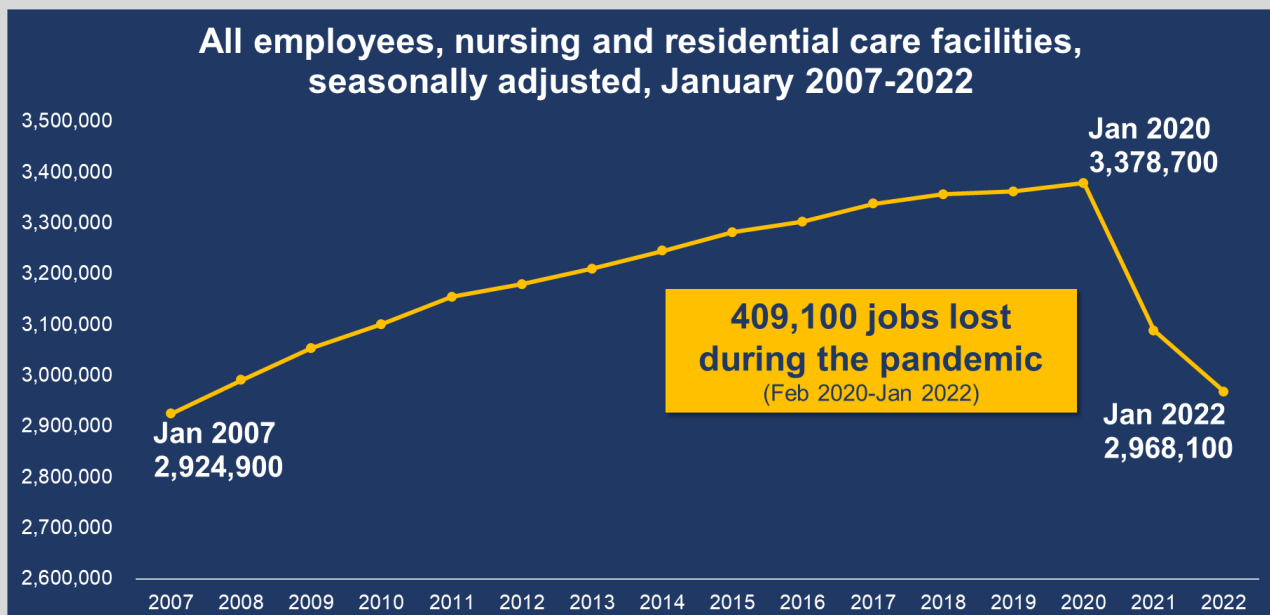
NURSING HOMES HAVE LOST 238,000 CAREGIVERS SINCE START OF PANDEMIC

Nursing homes experienced modest (2,100) job gains in January 2022. It was the first month of job growth for the industry since July 2019. Overall, nursing homes have lost nearly 238,000 employees – or 15 percent of its total workforce – since the start of pandemic.



Source: Bureau of Labor Statistics (BLS) January 2020 – January 2022

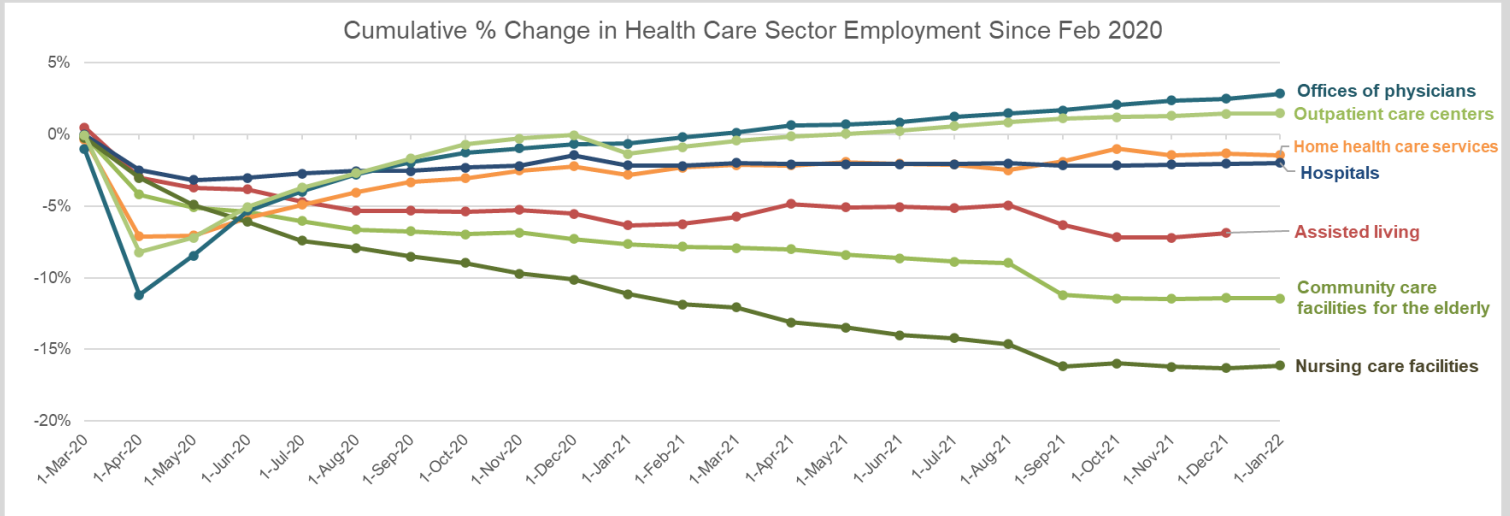
THE ENTIRE LONG TERM CARE INDUSTRY IS FACING A 15-YEAR LABOR LOW



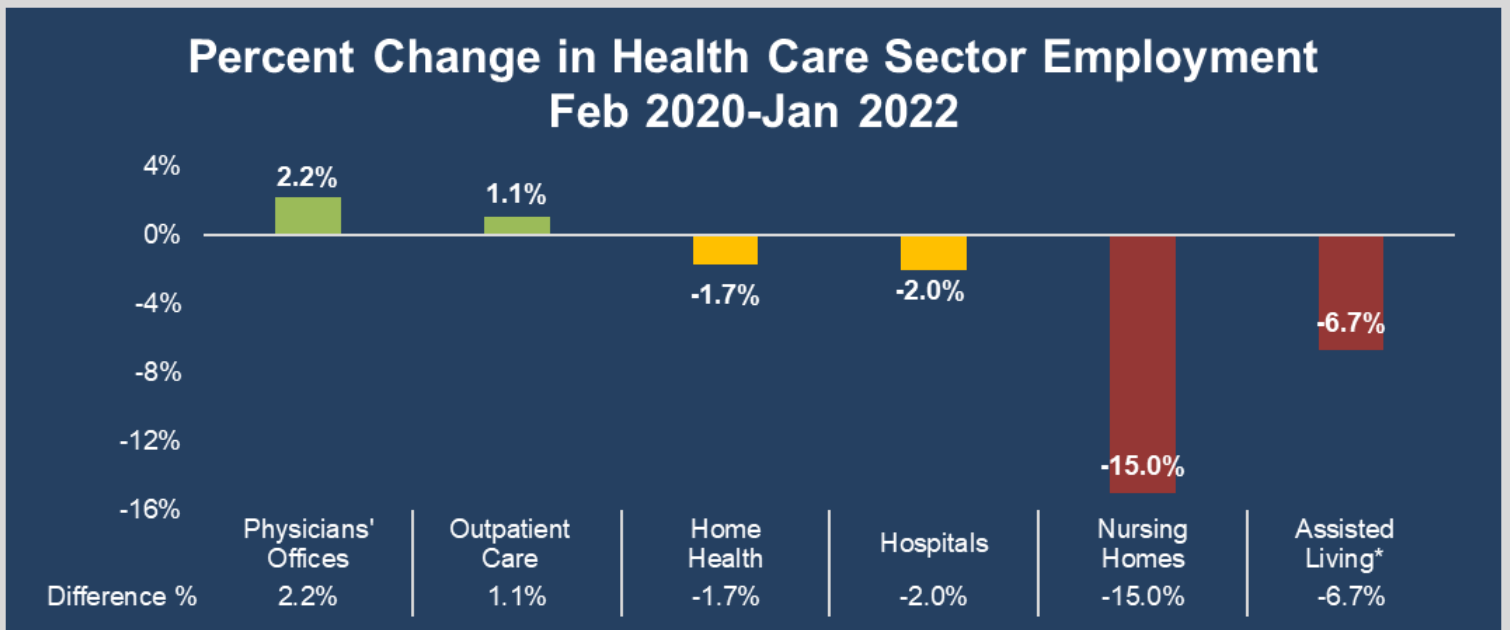
Source: Bureau of Labor Statistics (BLS) January 2007-2022
Industry: Nursing and residential care facilities (NAICS Code: 623)

LONG TERM CARE: WORST IMPACTED INDUSTRY OF HEALTH CARE SECTOR

While hospitals, physicians' offices, outpatient care centers and other health care facilities have nearly reached or surpassed pre-pandemic staffing levels, long term care facilities are still experiencing substantial job losses.



Source: Bureau of Labor Statistics (BLS) February 2020 – January 2022
*Assisted Living BLS data through December 2021



Source: Bureau of Labor Statistics (BLS) February 2020 – January 2022
*Assisted Living BLS data through December 2021